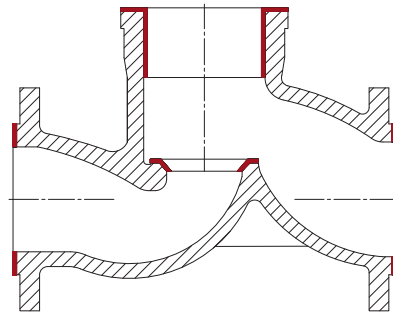
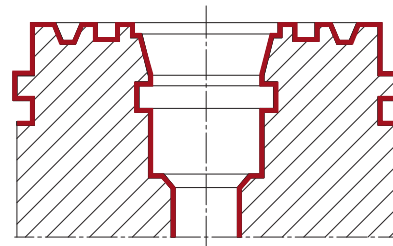




MD 1 Machining of globe valve seat



Machining applications for MD machines



Portable on-site boring and facing machine for precision machining of valve seats, pressure seal areas, bores and flanges, also for:

- Compressor casings
- Turbine casings
- Pump casings

Drives:

- Electric 230 V AC, 50/60 Hz
- Pneumatic 90 psi (5–7 bar)
- Hydraulic

For MD 1 to MD 3:

- Automatic and manual axial feed: infinitely adjustable

For MD 250 to MD 3:

- Automatic radial feed

Optional available:

- High speed grinding device
- Taper boring heads
- Spindle extensions
- Extended spindle length
- Custom made cutting and grinding tools



MD with grinding device

| Type: | Working ranges: | Inches: | Workingdepth: | Inches: |
|--------|-----------------|---------|-------------------|---------|
| MD 250 | to Ø 400 mm | 15,7" | 200 mm | 7,9" |
| MD 1 | to Ø 400 mm | 15,7" | 430 mm | 16,9" |
| MD 2 | to Ø 600 mm | 3,6" | 600 mm | 23,6" |
| MD 3 | to Ø 1000 mm | 39,4" | 600, 800, 1000 mm | |

BORING, TURNING AND FACING MACHINES

■ **unigrind MD**



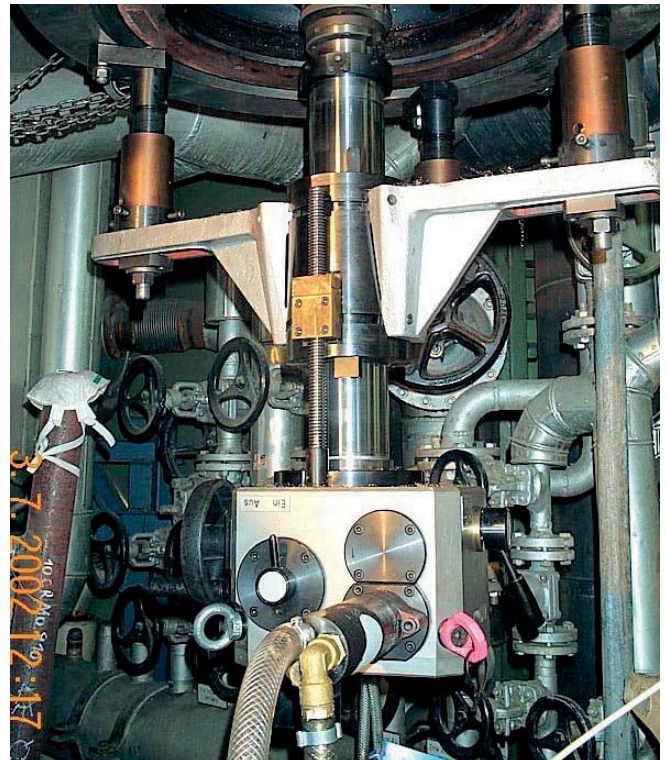
MD 250 with boring and facing head



MD 250 with taper boring head



MD Application on site on a safety relief valve



MD Application on site, overhead machining